



# CAPABILITIES STATEMENT



## About Us

Global Coating Systems (GCS) is a 100% Australian owned and operated company based in Western Australia. GCS specialise in protective coatings for the resources, industrial and defence sectors. We only use the highest quality products, installed by our certified professionals.

Established in 2021, GCS are specialist coating experts, we apply Polyurea, Polyurethane, Spray Foam, Epoxy Paint Systems and other specialty coatings. We are also certified Rhino Linings applicators.

### Divisions & Associated Entities:

- ➔ Pulley Protection
- ➔ Mining Equipment
- ➔ Fabrication
- ➔ Rope Access & Scaffolding
- ➔ Project Delivery Group
- ➔ Shut Down Services
- ➔ Ballistic Industries
- ➔ USS (WA) - Universal Storage Solutions
- ➔ Ceramics

# Vision & Values

## ● Vision

To be globally recognised as a preferred provider of quality coatings applications.

## ● Values

- Company-wide commitment to zero harm
- Honesty and ethical behaviour is the cornerstone of our relationships with our clients and our workforce
- Responsibility and accountability for our actions, including social media, is an integral part of our culture
- Display integrity with all our dealings with our workforce, contractors and clients; and
- Creating opportunities for our people.

## ● Strategy

Our strategy is built upon:

- Workers go to work and come home in the same condition
- Staff that enjoy coming to work each day
- A workforce that gets paid correctly and is provided with ongoing opportunities
- Clients who are highly satisfied
- An operation that can serve small local clients and large national clients alike; and
- A focus on long term contracts, partnerships and alliances.



## Our Divisions

- ➔ **Global Coating Systems (GCS)**  
Specialised Coatings and Mining/Industrial Equipment, operating out of four workshops across WA (Rockingham, Munster, Port Hedland and Newman).
- ➔ **Ballistic Industries**  
Specialist Defence Coatings, operating out of our Rockingham workshop.
- ➔ **USS (WA) - Universal Storage Solutions**  
Tank Solutions and Bulk Storage Maintenance, operating remotely on site state wide.
- ➔ **Fabrication**  
Complete fabrication and welding services for the mining, construction and infrastructure sectors.
- ➔ **Rope Access & Scaffolding**  
Our team of certified professionals combines rope access methodology with trade qualified maintenance people to service any difficult to reach area complicated by height on site.
- ➔ **Project Delivery Group**  
Specialised Project Management and Labour Support, operating state wide.
- ➔ **Shut Down Services**  
Turbine and Electrical Maintenance for Solar<sup>®</sup> Turbines, GE Aero-derivative Equipment and Centrifugal Compressors.
- ➔ **Ceramics**  
For serious heat and abrasion resistance.



## ● Pulley Protection

Rhino TUFF STUFF® is a two-component, 100% solids (no VOCs, no solvents), exothermic, rapid curing, elastomeric polyurethane lining system. Used as a 3mm DFT (Dry Film Thickness) protection system for locking assemblies, it offers a superior barrier to corrosion over standard painting systems and locking cover systems.

The Rhino Tuff Stuff® is applied by certified and qualified applicators to the face of the pulley end discs and over the locking assemblies to the pulley shaft. The Tuff Stuff® superior coating spray sets in seconds and is touch dry in 60 seconds with either a textured or smooth surface finish.



## ● Mining & Industrial Equipment

As specialist coating experts, we apply a variety of products to a wide range of items through all four of our workshops, primarily servicing the mining and industrial sector.



Services include:

- ➔ Abrasive Blasting
- ➔ High Pressure Water Blasting
- ➔ Epoxy Paint Systems
- ➔ Polyurethane Paint Systems
- ➔ Plural Polyurethane/Polyurea Systems
- ➔ QA reporting by our in house NACE inspectors.

## ● Fabrication

With unparalleled experience and working with trades people qualified to the highest levels, we offer complete fabrication and welding services for the mining, construction and infrastructure sectors.

- ➔ On Site Shutdown and Project Management Teams
- ➔ Structural Steel and Mechanical Engineering
- ➔ Steel, Aluminium and Stainless-Steel Fabrication
- ➔ Exotic Metal Fabrication
- ➔ Plant refurbishment, relines and rebuilds
- ➔ Jaw Crusher Service
- ➔ Screening Repairs
- ➔ Spooling Fabrication and Installs
- ➔ 1200m2 workshop with 10T Overhead Crane
- ➔ 5 acres of laydown area







## Rope Access & Scaffolding

Our team of certified professionals combines rope access methodology with trade qualified maintenance people to service any difficult to reach area complicated by height on site.

We pride ourselves on safety, efficiency and quality, ensuring a quality outcome even in the most hard to reach places.

- ➔ IRATA Qualified Rope Access Labour
- ➔ Confined Space Management
- ➔ Inspections and Reporting
- ➔ Protective Coatings and Corrosion Prevention
- ➔ Concrete & Masonry Remediation
- ➔ Safety Compliance & Oversight

## Project Delivery Group



When GCS takes on any major project, we assign two members of staff from our Project Delivery Group to provide technical oversight, project control and ongoing project and management support.

One of our senior supervisors will be teamed up with a member of our management team to give you a direct line at any one time from start to finish on your projects.

We can also provide full labour support for major projects, coupled with a support management team.

### ● Our Support Team



**Matt Kempthorne**  
*Operations Coordinator*



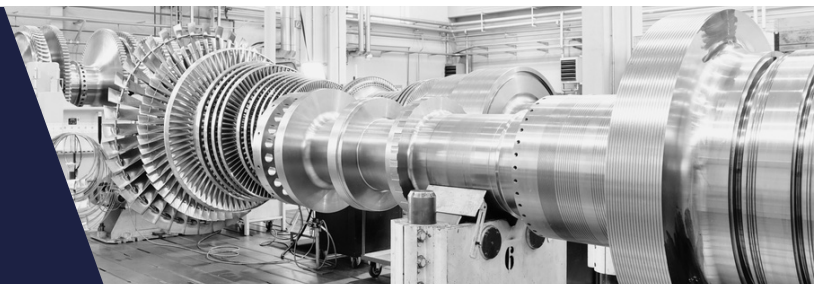
**Kade Storer**  
*Pulley Division Manager*



**Chris Summerfield**  
*Mechanical Project Manager*



# Shut Down Services



## Turbine and Electrical Maintenance

### Solar® Turbines Equipment

#### Models:

- ➔ Saturn® 10 & 20
- ➔ Centaur® 40 & 50
- ➔ Taurus™ 60 & 70
- ➔ Mars® 90 & 100
- ➔ Titan™ 130

#### Capability:

- ➔ General Servicing & Preventative Maintenance
- ➔ Borescope Inspection
- ➔ Engine exchange including Laser Alignment
- ➔ Equipment fault finding and analysis on both PLC5 and Logix 5000 control systems

### GE Aero-derivative Equipment

#### Models:

- ➔ LM2500 Base, +, +G4 (SAC & DLE)
- ➔ LM2500 6 Pack Power Turbines
- ➔ LM5000
- ➔ LM6000 PA,PC,PD,PF,PF+
- ➔ LMS100

#### Capability:

- ➔ Engaged by OEM's Air New Zealand, TransCanada Turbines & MTU
- ➔ General Servicing & Preventative Maintenance
- ➔ Borescope Inspection
- ➔ Engine exchange including Laser Alignment
- ➔ Level 2 maintenance & repairs
- ➔ Hot section exchange (LM2500 & LM5000 only)

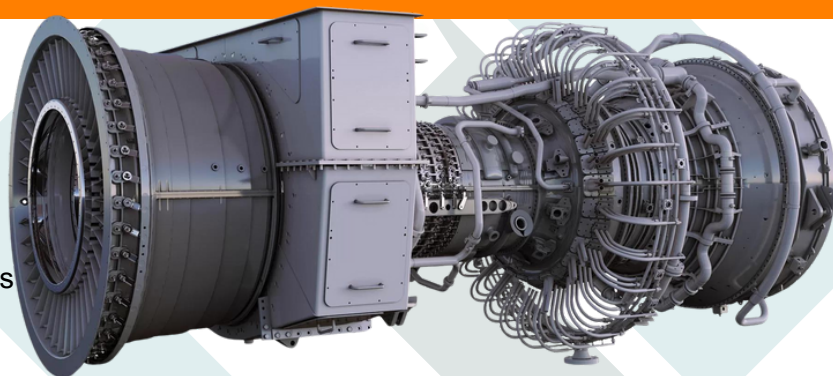
### Centrifugal Compressors

#### Models:

- ➔ Solar C16 & C33
- ➔ Dresser-Rand Datum - D4 & D6

#### Capability:

- ➔ Compressor exchange inc. Laser Alignment
- ➔ Bearing, Dry Gas & Wet Gas Seal replacements
- ➔ Field tooling for Solar C16 Models



## Ballistic Industries



Ballistic Industries is the Military arm of GCS which specialises in servicing the defence sector with a variety of high-performance coatings; offering blast mitigation, ballistic damage minimisation and prevention and extreme heat exposure damage prevention.

### ● **BattleJacket® High Caliber Safety and Security**



Battle-proven for nearly two decades throughout the U.S. military, BattleJacket® is a revolutionary self-sealing, self-healing fire protective urethane polymer coating used to protect vehicles, fuel cells, holding tanks, pipelines, railcars, and countless other assets.

The BattleJacket® coating acts as an instant sealant when the coated surface is pierced by a bullet or projectile, mitigating fuel loss and potential subsequent explosion.

Additionally, BattleJacket® protects treated surfaces from UV, weather, corrosion, fire and chemical spills. BattleJacket's® patented system has multiple formulas, tailorable to meet your specific requirements.

# Ballistic Industries



## ● FireCap™ Industry Leading Fire Protective Coating

FireCap™ is High Impact Technology's passive heat shielding system designed specifically to protect heat and flame-exposed surfaces, including fuel cells and critical structural substrates. FireCap™ 's unique technology provides the user life-saving time when exposed to extreme persistent heat or flames offering enhanced protection to facilities, storage tanks, battlefield vehicles, and many other critical assets. FireCap™ is effective and economical providing the user life-saving time when exposed to extreme persistent heat or flames.

Firecap™ provides protection to contents behind the coating from direct persistent extreme fire events, allowing critical response time to extinguish the flame. FireCap™ has been used to protect structural steel columns and beams, wiring, actuators, fuel tanks, wheel wells, chemical holding tanks, storage tanks, and can be used on countless surfaces across a wide array of military and industrial applications.





## USS (WA)



USS (WA) stands for Universal Storage Solutions. A subsidiary of GCS, we are a 100% Australian owned company who specialises in Sealed Storages, Tank Work and Operational Maintenance for the Agricultural, Mining and Industrial sectors.

Our services include:

- ➔ Sealed Storage Sealing and Maintenance (New and Refurb)
- ➔ Tank Solutions (New and Refurb)
- ➔ Operational Maintenance

### Sealed Storages & Silo Sealing

The USS (WA) team brings innovation and cost-effective solutions to this niche trade, with highly skilled specialist applicators within its team, USS uses a variety of coatings and techniques to deliver a successful seal. USS (WA) provides clients with innovative new ways as well as traditional methods to seal their storages to ensure successful fumigation.

USS (WA) understands the need for value and return on investment when refurbishing a silo or bulk storage. USS (WA) leverages the capability of its parent company, Global Coating Systems, to deliver a turnkey solution when refurbishing your valued asset or newly built storage.





## USS (WA)

USS  
UNIVERSAL STORAGE SOLUTIONS







### Tanks

The USS (WA) team brings innovation and cost-effective solutions to this sector, with highly skilled specialist applicators. USS (WA) uses a variety of coatings and techniques to deliver a successful project, be it new build or refurbishment. USS (WA) is providing clients with innovative new ways as well as traditional methods to line and paint their tanks to prevent corrosion and extend the lifespan of the asset. USS (WA) understands the need for value and return on investment when refurbishing a tank. USS (WA) leverages the capability of its parent company, Global Coating Systems, to deliver a turnkey solution when refurbishing your valued asset or newly built storage.

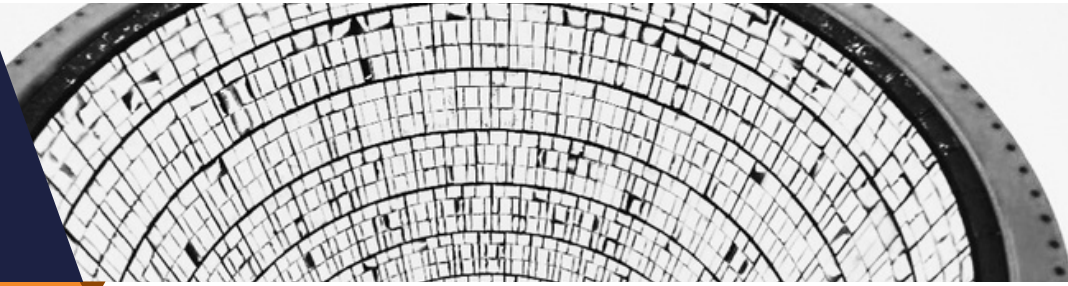
### Operational Maintenance

The USS (WA) maintenance team specialises primarily in preventative maintenance and corrosion control.

Services include:

-  Abrasive Blasting
-  High Pressure Water Blasting
-  Epoxy Paint Systems
-  Polyurethane Paint Systems
-  Plural Polyurethane/Polyurea Systems
-  QA reporting, testing and commissioning

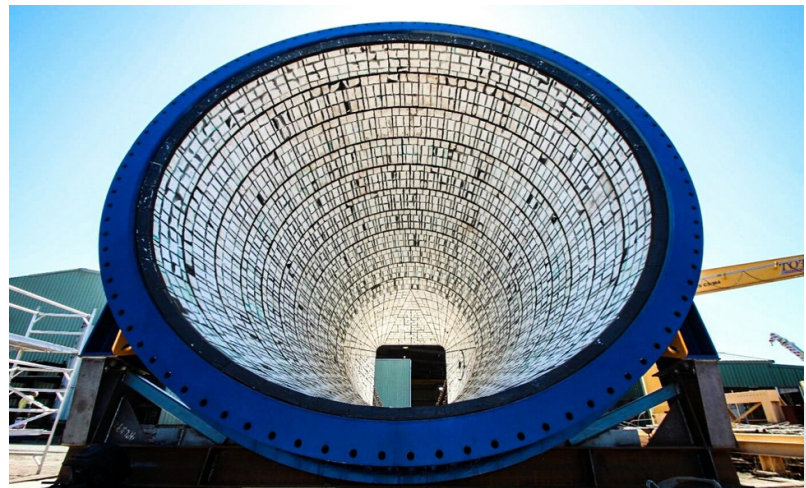
## Ceramics



GCS exclusively uses Saint-Gobain ceramics, the Liners are manufactured locally, using either customized polyurethane or vulcanized rubber matrix. The production process has been specifically engineered to allow for a large degree in flexibility in the finished product. This allows for the design of custom liner kits, specific to the intended application and providing the optimum life performance.

Strict installation and quality control procedures are followed in the fit up of all the designed liner kits. Where capable, GCS works to a zero-gap tolerance between liners to prevent premature failure and allow the maximum life expectancy to be achieved.

### ● 3D Scanning, Drafting and Deformation Reporting



GCS can provide high-definition 3D laser scanning at sites throughout the Pilbara. 3D Scanning is a powerful tool which can be used to measure wear and deformation over time. GCS applies these techniques to perform wear analysis on Chute internals and mining wear products monitoring conditions and life expectancies.

These services can dramatically reduce maintenance downtime and therefore increase plant productivity.

- ➔ Impact Wear Liner
- ➔ 112mm High Impact Liner
- ➔ Zero Tile
- ➔ Direct Bond Ceramics

## ● Management Team



### Adam Yates MRICS

*General Manager*

A Chartered Quantity Surveyor with 20 years experience, Adam oversees all aspects of the business, including risk management, commercial management, compliance and governance. He is also heavily involved in all major tenders, business pursuits and most high level aspects of operations.



### Steve Thorne

*Operations Manager*

A former member of the Royal Australian Navy, with tertiary qualifications in Frontline Management and Electronics Engineering, Steve provides leadership and governance to the group.



### Kim Boschman

*Commercial Manager*

Kim has been involved in plural component spray applications for many years and is a certified Rhino Linings Applicator (Level 3 Technician). He started his career in the armed forces serving in Iraq during 2002-'03 before settling into a mining career, working as a shutdown planner & coordinator.





# CONTACT US

 [globalcoatingsystems.com](http://globalcoatingsystems.com)

 [info@global-cs.com.au](mailto:info@global-cs.com.au)

 Fabrication:  
[fab@global-cs.com.au](mailto:fab@global-cs.com.au)

 0487 073 501

ABN 24 655 060 601

 5 Whittle Road  
Rockingham WA 6168

555 Mayor Road  
Munster WA 6166

Lot 2063 Abydos Place  
Wedgefield WA 6721

5 Wonmunna Rd  
Newman WA 6753